

PEARLWEAVE  
**Personnel Safety Nets**  
**ANSI Certified**



PearlWeave Personnel Safety Net Systems when installed horizontally provide passive fall protection for workers above the nets and passive Debris Netting protection for workers and the public below the nets.

PearlWeave Personnel Safety Nets are hand-crafted to rigid specifications and then thoroughly tested, per ANSI 10.11 to ensure that they exceed all mandatory and voluntary safety standards.

**High Strength Nylon:**

PearlWeave Personnel Safety Nets are manufactured from durable high-strength nylon. Our 4-inch, double-strand, diamond construction has been designed and tested to withstand force in excess of 17,500 foot-pounds. They have been certified to comply with ANSI A10.11 and OSHA 1926.500-Subpart M.

**Forged Snap Hooks:**

Forged steel snap hooks are lashed into place every 48-inches. Staggered spacing on opposite sides allows for nets to be easily connected to each other.

**Ultra-Violet Retardant:**

PearlWeave Personnel Safety Net Systems and Debris Netting are provided with a latex coating. This treatment retards the effects of ultra-violet (UV) exposure and improves the nets' resistance to abrasion.

**Flame Retardant:**

PearlWeave's exclusive latex flame retardant treatment is unique in that it can be added to our standard coating. As a result, only our nets can pass NFPA 701 without a decrease in overall net performance.

**Debris Liner:**

Personnel nets can be lined with Debris Netting to catch debris, tools, etc. that otherwise would fall through the 4-inch openings. Debris Netting is manufactured from polyester and/or nylon materials and are available in mesh sizes from 1/8-inch to 7/8-inch.

Size (ft.)	Desc.	PG No.
10x10	Net	PN-1010
10x15	Net	PN-1015
10x20	Net	PN-1020
10x25	Net	PN-1025
10x30	Net	PN-1030
10x40	Net	PN-1040
15x15	Net	PN-1515
15x20	Net	PN-1520
15x25	Net	PN-1525
15x30	Net	PN-1530
15x40	Net	PN-1540
20x20	Net	PN-2020
20x25	Net	PN-2025
20x30	Net	PN-2030

Size (ft.)	Desc.	PG No.
20x40	Net	PN-2040
20x50	Net	PN-2050
25x25	Net	PN-2525
25x30	Net	PN-2530
25x40	Net	PN-2540
25x50	Net	PN-2550
30x30	Net	PN-3030
30x40	Net	PN-3040
40x40	Net	PN-4040
10x10	Net with Liner	PNL-1010
10x15	Net with Liner	PNL-1015
10x20	Net with Liner	PNL-1020
10x25	Net with Liner	PNL-1025
10x30	Net with Liner	PNL-1030
10x40	Net with Liner	PNL-1040
15x15	Net with Liner	PNL-1515
15x20	Net with Liner	PNL-1520
15x25	Net with Liner	PNL-1525
15x30	Net with Liner	PNL-1530
15x40	Net with Liner	PNL-1540
20x20	Net with Liner	PNL-2020
20x25	Net with Liner	PNL-2025
20x30	Net with Liner	PNL-2030
20x40	Net with Liner	PNL-2040
20x50	Net with Liner	PNL-2050
25x25	Net with Liner	PNL-2525
25x30	Net with Liner	PNL-2530
25x40	Net with Liner	PNL-2540
25x50	Net with Liner	PNL-2550
30x30	Net with Liner	PNL-3030
30x40	Net with Liner	PNL-3040
40x40	Net with Liner	PNL-4040

PEARLWEAVE  
**Debris Netting**  
**ANSI Certified**



PearlWeave offers a full-line of OSHA compliant debris netting systems. Selection criteria for determining mesh construction and rated capacity are based on product weights/descriptions and fall distance/trajectory.

**High Strength Nylon:**

PearlWeave rated debris nets are manufactured from durable high-strength nylon in diamond or square mesh construction. Available in mesh sizes from 1-inch to 4-inch, our knotted nylon products have rated capacities up to 17,500 foot-pounds.

#### Border Treatments:

PearlWeave debris netting products can be finished with polypropylene border ropes or other custom edge treatments.

#### Latex Coating:

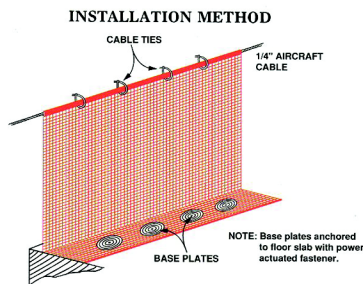
PearlWeave nets are provided with a latex coating. This treatment improves the nets resistance to abrasion allowing for optimum long-term indoor and outdoor protection.

#### Fire Retardant:

PearlWeave's exclusive latex flame retardant treatment is unique in that it can be added to our standard net coating. As a result, only our nets can pass NFPA 701 without a decrease in overall net performance.

Mfg. No.	Material	Mesh Size	Capacity (ft.lbs.)	Mesh Construction	PG No.
154D	Nylon	1/2	500	Diamond	DN-154D
263D	Nylon	1	2000	Diamond	DN-263D
263S	Nylon	1	2000	Squared	DN-263S
481D	Nylon	2	2500	Diamond	DN-481D
481S	Nylon	2	2500	Squared	DN-481S
497D	Nylon	2	3000	Diamond	DN-497D
497S	Nylon	2	3000	Squared	DN-497S
415D	Nylon	2	4500	Diamond	DN-415D
415S	Nylon	2	4500	Squared	DN-415S
439D	Nylon	2	4500	Diamond	DN-439D
439S	Nylon	2	4500	Squared	DN-439S
839D	Nylon	4	1500	Diamond	DN-839D
839S	Nylon	4	1500	Squared	DN-839S

## PEARLWEAVE Guardrail Netting



OSHA 1926.500-Subpart M requires guardrail and toeboard systems on all open-sided floors, platforms, runways, wall openings, holes, roofs, excavations, and machinery areas. Additionally, when equipment or materials are piled higher than the top edge of a standard toeboard, debris netting must be installed from the top rail to deck level to provide overhead protection for employees working below.

PearlWeave Safety Netting's accepted guardrail/toeboard system is designed to provide protection in excess of these standards for Personnel AND Debris. When properly installed from compliant required top-rail and secured directly to deck level, PearlWeave satisfies OSHA requirements for mid-rail and toeboard protection, for Personnel Fall Protection and for overhead protection against debris as defined above. While acting as a high-end, visual and debris containment system, PearlWeave also meets/exceeds Subpart M regulations for Personnel

Fall Protection! It also meets/exceeds NFPA 701 and ASTM E84 standards for Fire Retardancy.

- Flame Retardant
- Mesh Size: 1/4 in.
- Roll Length: 150 ft.
- Color: Fluorescent orange except for standard grade which is fluorescent red

Grade	Width (in.)	Break Str. (lbs./in.)	Burst Str. (psi)	Color	PG No.
Standard	48	43	70	Fluorescent Red	PEARL-S048F
Premium	48	85	126	Fluorescent Orange	PEARL-048F
Industry	66	57	86	Fluorescent Orange	PEARL-I066F

## PEARLWEAVE Baseplate



3 in. round polypropylene baseplates are used to fasten Pearlweave Guardrail Netting products to deck level.

Mfg. No.	PG No.
	BASEPLATE

## PEARLWEAVE Debris/Scaffold Netting

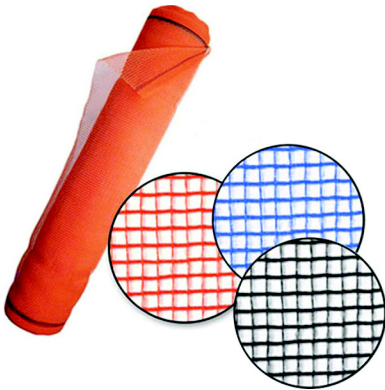


Designed to protect workers and pedestrians walking near the base of a scaffold structure. It also provides comfort for construction personnel by allowing air circulation. Scaffold netting allows most of the wind to pass through, so during windy conditions, it avoids excessive wind loads on the netting attachments or on the scaffold itself.

- Flame Retardant
- Roll Length: 150 ft.

Grade	Color	Mesh Size (in.)	Break Str. (lbs./in.)	Burst Str. (psi)	Width (in.)	PG No.
Premium	Black	1/8	105	192	102	PEARL-102F
Standard	Black	3/16	43	70	102	PEARL-S102F
Industry	Orange	3/16	57	86	102	PEARL-I102F
Polyethylene	Orange	1/16	97	NA	102	SG-102
Polyethylene	Orange	1/16	97	NA	120	SG-120
Raschell	Orange	1/4	N/A	120	180	DNR-R15

PEARLWEAVE  
**Barrier Netting**  
*Light Duty*



Knitted polyethylene fabric can be used for construction enclosures, jobsite protection, barrier fencing, scaffold enclosures and much more.

- Roll Size: 48 in. x 150 ft.

Color	Flame Retardant	PG No.
Orange	Yes	DG-048
Black	No	DG-B048
Blue	Yes	DG-BL048

PEARLWEAVE  
**Privacy Netting**



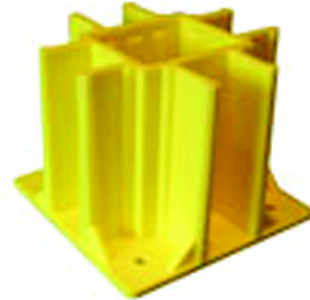
Privacy Fence Netting is ideal for any construction site, commercial property, special event or even a private residence. Made with 90%

Knitted Debris Fabric, Privacy Fencing gives 90% privacy blockage, but still allows for good air passage and ventilation.

- Color: Green
- Roll Size: 92 in. x 150 ft.

Mfg. No.	PG No.
	PRIVACY

PEARLWEAVE  
**Guardrail Safety Boot**

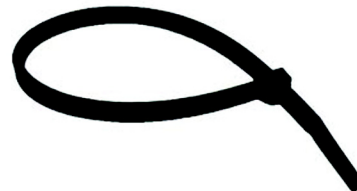


The Safety Boot is a reusable base for constructing free-standing temporary guardrails and rails that meet OSHA standards.

- Two 2x4s are inserted into the center core of the base to form a rigid post
- Anchors directly into any walking/working surface (wood, OSB, or concrete) with no bracing needed
- Built-in flanges allow toeboards to be inserted between posts without using fasteners.
- Safety Boot railings are free-standing and can remain in place throughout construction, including drywall
- When the permanent railings are installed, the Safety Boot with post attached can be easily removed for use at another construction site

Mfg. No.	PG No.
	BOOT

ADVANCED CABLE TIES  
**Cable Ties**

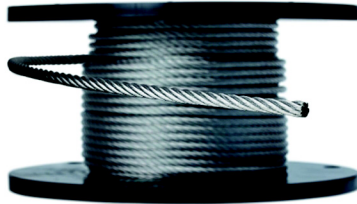


Nylon Cable Tie, Black Color, 100 per Pack.

Length (in.)	Tensile Strength (lbs.)	Pack	PG No.
8	120	100	CABLE-TIE
5	40	100	CABLE-TIE-05
8	50	100	CABLE-TIE-08
9	250	50	CABLE-TIE-09
11	50	100	CABLE-TIE-11
14	120	100	CABLE-TIE-14

Length (in.)	Tensile Strength (lbs.)	Pack	PG No.
15	250	50	CABLE-TIE-15
24	175	50	CABLE-TIE-24

## Aircraft Cable



Galvanized Aircraft Cable, 7 x 19 construction.

Size	Desc.	PG No.
1/4 x 1000	Galvanized	CABLE-1/4
1/4 x 250	Galvanized	CABLE-1/4V
3/8 x 250	Galvanized	CABLE-3/8
3/8 x 500	Galvanized	CABLE-3/8-500

## ADVANTAGE Steel Wire Rope



Galvanized Steel Wire Rope, 1/2 in. size, 250 ft./reel,

PG No.
CABLE-1/2

## Cable Clamp Malleable



Malleable Wire Rope Clips. These clips are intended for use in making eye termination in right regular lay wire rope. Such an assembly is for non-critical light duty use where a small applied load is expected such as hand rails, fencing, guard lines, etc. For this reason an efficiency of the termination is not stated.

Size (in.)	PG No.
1/4	CLAMP-1/4
3/8	CLAMP-3/8

## Cable Clamp Drop Forged



Drop-Forged, Galvanized, Wire Rope Clips for heavy duty applications.

Size (in.)	PG No.
3/8	CLAMP-F
1/2	CLAMP-F1/2



## Turnbuckle Hook/Eye



### Drop-Forged Turnbuckle

- Turnbuckles are designed for use in straight line, do not subject to bending or unusual angles.
- End fittings are hot galvanized after threading
- Hexagon ends on all bodies provide full wrench bearings

Size (in.)	Work Load Limit (Lbs.)	Average Overall Length with Ends in Closed Position**	Desc.	PG No.
3/8 x 6	1000	11-7/8	Hook/Eye	TURN-3/8
1/2 x 9	1500	16-5/16	Hook/Eye	TURN-1/2
1/2 x 9	1500	16-5/16	Eye/Eye	TURN-1/2E

## Turnbuckle Jaw/Eye



### Drop-Forged Turnbuckle

- Turnbuckles are designed for use in straight line, do not subject to bending or unusual angles.
- End fittings are hot galvanized after threading
- Hexagon ends on all bodies provide full wrench bearings

Size (in.)	Work Load Limit (Lbs.)	Average Overall Length with Ends in Closed Position**	Desc.	PG No.
1/2 x 9	1500	16-5/16	Jaw/Eye	TURN-1/2J
5/8 x 9	2250	18-1/2	Jaw/Eye	TURN-5/8

## Forged Eyebolt Machine



Machine Eye Bolt, forged steel, colored, shoulder or regular pattern

Size (in.)	PG No.
3/8 x 3/4	EYEBOLT-3/8S
5/8 x 1-3/4	EYEBOLT-5/8S

## Forged Eyebolt Shoulder Nut



Hot Dip Galvanized, Forged Steel Shoulder Nut Eye Bolt with Galvanized Hex Nut

Size (in.)	PG No.
3/8 x 2-1/2	EYEBOLT-3/8
1/2 x 3-1/4	EYEBOLT-1/2L

## Shackle



Forged, Galvanized Anchor Shackle, Screw-Pin Type.

Size (in.)	Working Load Limit (Tons)	Inside Length	PG No.
1/2	2	1-7/8	SHACKLE-1/2